

# INOVANCE

## SV670 범용 서보드라이브

더욱 강화된 기능, 라인업의 확장

펄스/아날로그 지령

CANopen

EtherCAT



# SV670P/N

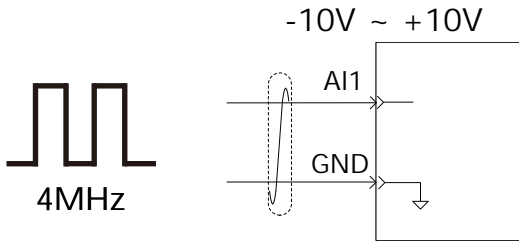
## Product family overview

### 제품 라인업

**SV670P - 펄스/아날로그 지령-CANopen 지령**  
 위치제어용 펄스 입력 (최대 4 MHz 지령주파수)  
 속도/토크제어용 아날로그 입력(1채널)

SV670N - EtherCAT  
 CiA402

7가



### EtherCAT

- CIA 402 Profile type (CoE)
- Profile position mode (PP)
  - Profile velocity mode (PV)
  - Profile torque mode (PT)
  - Homing mode (HM)
  - Cyclic synchronous position mode (CSP)
  - Cyclic synchronous velocity mode (CSV)
  - Cyclic synchronous torque mode (CST)

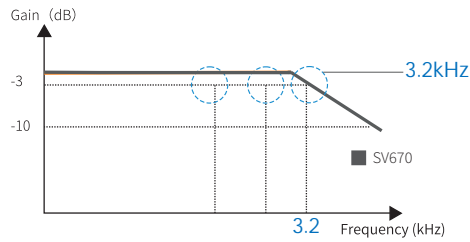


### CANopen

\*

3.2kHz

SV670	
	12 kHz
	1.6 μs
	62.5 μs
	62.5 μs



\* ... 가

USB-C (PC ) RS485(Modbus RTU )

-23

- IP20

- 200V

가

23

8,388,608

가

- STO SIL3 EN/IEC 61800-5-2 compliant<sup>1</sup>

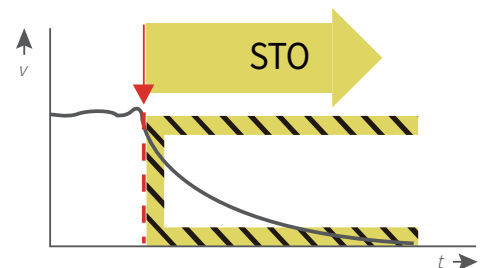
STO(Safe Torque Off) 가

200V

1.5kW

200V

5.0kW





가

3S2 3C3 (ACC.TO IEC60721-3-)

가

PCB

STune ETune

가

- STune
- ETune

PC

- USB-C

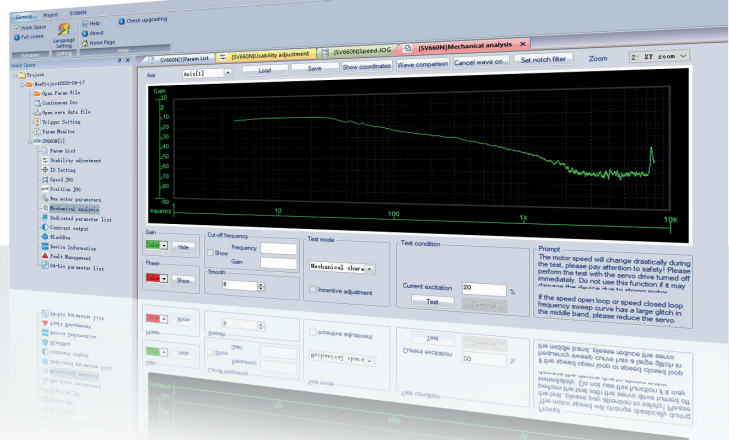
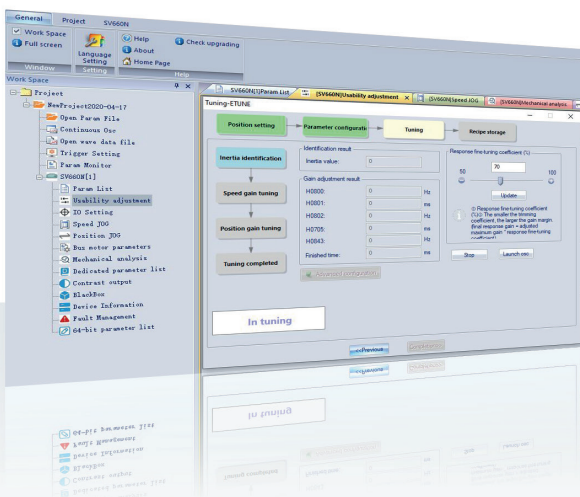
가

### Third party 모터 대응

수동 셋업으로 ABZ인크리멘탈, Nikon, Tamagawa 엔코더 서보모터 대응

### 리니어 모터 대응

간단한 마법사 형식의 리니어 모터 설정 지원 (ABZ 인크리멘탈 스케일 대응)



# SV670P/N

Power supply voltage	Motor base speed (RPM)	Motor max speed (RPM)	Motor power (W)	Motor rated torque (N·m)	Motor peak torque (N·m)	Motor frame size (mm)	Rotor inertia (0.0001x kg·m <sup>2</sup> )	SV670 current (rated)	SV670 current (peak)	MS1 motor type	SV670x type Where * can be the P (pulse), N(EtherCAT)	Size	Dimensions H x W x D (mm)	Motor mass (kg)	Drive mass (kg)	Connector kit
1/3 PH 220V	3000	6000	50	0.16	0.56	40X40	0.026	1.6	5.80	MS1H1-05B30CB-A330Z	SV670xS1R6I-FS(-INT)	A	170X45.5X150	0.5	1.13	S6-C22
	3000	6000	100	0.32	1.12	40X40	0.041	1.6	5.80	MS1H1-10B30CB-A330Z	SV670xS1R6I-FS(-INT)	A	170X45.5X150	0.5	1.13	S6-C22
	3000	6000	200	0.64	2.24	60X60	0.207	1.6	5.80	MS1H1-20B30CB-A331Z	SV670xS1R6I-FS(-INT)	A	170X45.5X150	1	1.13	S6-C22
	3000	6000	400	1.27	4.46	60X60	0.376	2.8	10.10	MS1H1-40B30CB-A331Z	SV670xS2R8I-FS(-INT)	A	170X45.5X150	1	1.13	S6-C22
	3000	6000	400	1.27	4.46	60X60	0.657	2.8	10.10	MS1H4-40B30CB-A331Z	SV670xS2R8I-FS(-INT)	A	170X45.5X150	1.5	1.13	S6-C22
	3000	6000	550	1.75	6.13	80X80	1.06	5.5	16.90	MS1H1-55B30CB-A331Z*	SV670xS5R5I-FS(-INT)	C	170X55X173	2	1.5	S6-C22
	3000	6000	750	2.39	8.36	80X80	1.38	5.5	16.90	MS1H1-75B30CB-A331Z	SV670xS5R5I-FS(-INT)	C	170X55X173	2.5	1.5	S6-C22
	3000	6000	750	2.39	8.36	80X80	2	5.5	16.90	MS1H4-75B30CB-A331Z	SV670xS5R5I-FS(-INT)	C	170X55X173	2.5	1.5	S6-C22
	1500	3000	850	5.39	13.50	130X130	13.3	7.6	23.00	MS1H3-85B15CB-A331Z	SV670xS7R6I-FS(-INT)	C	170X55X173	6.7	1.5	S6-C29
	3000	6000	1000	3.18	9.12	80X80	1.75	7.6	23.00	MS1H1-10C30CB-A331Z*	SV670xS7R6I-FS(-INT)	C	170X55X173	3	1.5	S6-C22
	3000	6000	1000	3.18	11.10	80X80	1.75	11.6	32.00	MS1H1-10C30CB-A331Z*	SV670xS012I-FS(-INT)	D	170X80X183	3	2	S6-C22
	3000	6000	1000	3.18	9.54	100X100	1.87	7.6	23.00	MS1H2-10C30CB-A331Z	SV670xS7R6I-FS(-INT)	C	170X55X173	5.6	1.5	S6-C29
1500	3000	1300	8.34	20.85	130X130	17.8	11.6	32.00	MS1H3-13C15CB-A331Z	SV670xS012I-FS(-INT)	D	170X80X183	8.15	2	S6-C29	
3000	5000	1500	4.9	14.70	100X100	2.46	11.6	32.00	MS1H2-15C30CB-A331Z	SV670xS012I-FS(-INT)	D	170X80X183	6.8	2	S6-C29	
3 PH 220V	3000	6000	2000	6.36	19.10	100x100	2.92	18.0	45.00	MS1H2-20C30CB-A331R	SV670xS018I-FS(-INT)	E	250x90x230	8.00	3.94	S6-C29
	3000	6000	3000	7.96	23.90	100x100	3.49	22.0	55.00	MS1H2-25C30CB-A331R	SV670xS022I-FS(-INT)	E	250x90x230	9.10	3.94	S6-C29
	3000	6000	3000	9.8	29.40	130x130	6.4	22.0	55.00	MS1H2-30C30CB-A331R	SV670xS022I-FS(-INT)	E	250x90x230	11.60	3.94	S6-C29
	3000	6000	4000	12.6	37.80	130x130	9	27.0	67.50	MS1H2-40C30CB-A331R	SV670xS027I-FS(-INT)	E	250x90x230	16.60	3.94	S6-C29
	3000	6000	5000	15.8	47.40	130x130	11.6	27.0	67.50	MS1H2-50C30CB-A331R	SV670xS027I-FS(-INT)	E	250x90x230	18.80	3.94	S6-C29
	1500	4500	1800	11.5	28.75	130x130	24.9	18.0	45.00	MS1H3-18C15CB-A331R	SV670xS018I-FS(-INT)	E	250x90x230	8.50	3.94	S6-C29
	1500	4500	2900	18.6	46.50	180x180	44.7	22.0	55.00	MS1H3-29C15CB-A331R	SV670xS022I-FS(-INT)	E	250x90x230	13.80	3.94	S6-C39
3 PH 400V	3000	6000	1000	3.18	9.54	100X100	1.87	5.4	14.00	MS1H2-10C30CD-A331Z	SV670xT5R4I-FS(-INT)	C	170X55X173	5.65	1.5	S6-C29
	3000	5000	1500	4.9	14.70	100X100	2.46	5.4	14.00	MS1H2-15C30CD-A331Z	SV670xT5R4I-FS(-INT)	C	170X55X173	6.7	1.5	S6-C29
	3000	5000	2000	6.36	19.10	100X100	3.06	8.4	20.00	MS1H2-20C30CD-A331Z	SV670xT8R4I-FS(-INT)	D	170X80X183	8.1	2	S6-C29
	3000	5000	2500	7.96	19.12	100X100	3.65	8.4	20.00	MS1H2-25C30CD-A331Z	SV670xT8R4I-FS(-INT)	D	170X80X183	9.1	2	S6-C29
	3000	5000	2500	7.96	23.90	100X100	3.65	11.9	29.75	MS1H2-25C30CD-A331Z	SV670xT012I-FS(-INT)	D	170X80X183	9.1	2	S6-C29
	3000	5000	3000	9.8	29.16	130X130	7.72	11.9	29.75	MS1H2-30C30CD-A331Z	SV670xT012I-FS(-INT)	D	170X80X183	11.6	2	S6-C29
	3000	5000	3000	9.8	29.40	130X130	7.72	16.5	41.25	MS1H2-30C30CD-A331Z	SV670xT017I-FS(-INT)	E	250X90X230	11.6	3.94	S6-C29
	3000	5000	4000	12.6	37.80	130X130	12.1	16.5	41.25	MS1H2-40C30CD-A331Z	SV670xT017I-FS(-INT)	E	250X90X230	16.6	3.94	S6-C29
	3000	5000	5000	15.8	40.91	130X130	15.4	16.5	41.25	MS1H2-50C30CD-A331Z	SV670xT017I-FS(-INT)	E	250X90X230	18.8	3.94	S6-C29
	3000	5000	5000	15.8	47.60	130X130	15.4	20.8	52.12	MS1H2-50C30CD-A331Z	SV670xT021I-FS(-INT)	E	250X90X230	18.8	3.94	S6-C29
	1500	3000	850	5.39	13.50	130X130	13.3	3.5	11.00	MS1H3-85B15CD-A331Z	SV670xT3R5I-FS(-INT)	C	170X55X173	6.7	1.5	S6-C29
	1500	3000	1300	8.34	20.85	130X130	17.8	5.4	14.00	MS1H3-13C15CD-A331Z	SV670xT5R4I-FS(-INT)	C	170X55X173	8.2	1.5	S6-C29
	1500	3000	1800	11.5	28.75	130X130	25	8.4	20.00	MS1H3-18C15CD-A331Z	SV670xT8R4I-FS(-INT)	D	170X80X183	9.55	2	S6-C29
	1500	3000	2900	18.6	37.20	180X180	55	11.9	29.75	MS1H3-29C15CD-A331Z	SV670xT012I-FS(-INT)	D	170X80X183	16.6	2	S6-C39
	1500	3000	4400	28.4	71.10	180X180	88.9	16.5	41.25	MS1H3-44C15CD-A331Z	SV670xT017I-FS(-INT)	E	250X90X230	21.25	3.94	S6-C39
	1500	3000	5500	35	87.60	180X180	107	20.8	52.12	MS1H3-55C15CD-A331Z	SV670xT021I-FS(-INT)	E	250X90X230	26.8	3.94	S6-C39
	1500	3000	7500	48	117.63	180X180	141	25.7	64.25	MS1H3-75C15CD-A331Z	SV670xT026I-FS(-INT)	E	250X90X230	35.2	3.94	S6-C39

\* MS1 CE UL MS1

For more information, please contact our local offices.



**이노벤스 테크놀로지 코리아 주식회사**  
**Inovance Technology Korea Co.,Ltd.**

www.inovance.co.kr

서울특별시영등포구선유로 130 에이스하이테크시티 3차 1003호  
 고객센터 : 02-3489-8850

이메일 : INOVANCEKR@inovance.eu



Kakao Channel



LinkedIn



Website